

Genuine DEUTZ Additives



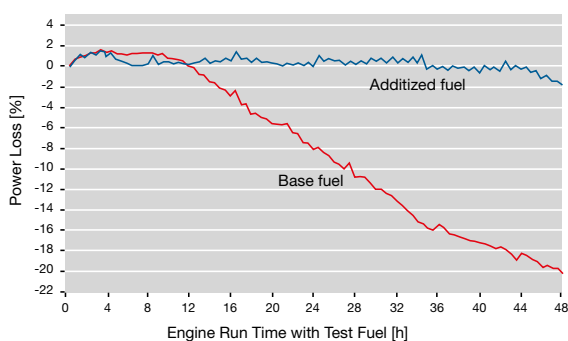
Genuine DEUTZ Additives



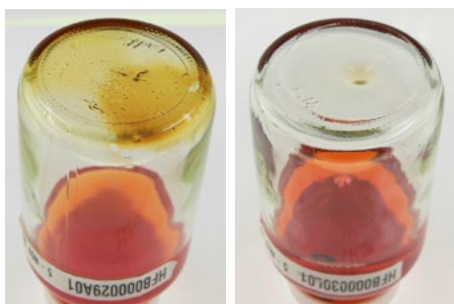
Deviations in local diesel fuel quality pose a significant challenge to maintaining the desired performance and reliability of the fuel system components. At this time, there are still huge differences in fuel quality, especially with fuels that contain 5-20% biodiesel that is based on rapeseed, palm oil or soy. The problem: Degrading biodiesel components in the fuel can lead to deposits and clogging within a diesel engine's sensitive injection system. The solution: DEUTZ Fuel Additives help prevent these problems from occurring and help to maintain the desired performance, reliability and durability that our customers demand!

DEUTZ Clean-Diesel InSyPro® is a dual-action, 2-in-1 additive:

CEC DW-10 injector fouling test with B10 fuel in passenger car engine



Storage demonstration – B10 test fuel @ 50°C for 3 month



Base fuel

Base fuel + additive

The use of unreleased additives may lead to deposits, corrosion and filter clogging to the point of breakdown of the exhaust after-treatment system. DEUTZ recommends repeated use as cleaning agent every 500 hrs. accompanied by oil change. For preventive protection and diesel fuel stabilization, Clean-Diesel InSyPro® should be added to the diesel fuel at half concentration.

„Keep Clean“ fuel stabilizer

Recommended every 500 h together with oil- and filter change

- ✓ Increases shelf life of diesel fuel and prevents deposits
- ✓ Prevents filters from becoming contaminated and clogged
- ✓ Guarantees a safe engine start after longer shutdowns

„Clean-Up“ cleaning action

Recommended for stand-by-operation and longer periods of engine shutdown

- ✓ Dissolves deposits in the injection system components
- ✓ Prevents black smoke caused by fuel deposits, reduced engine performance and increased fuel consumption
- ✓ Recommended especially for high pressure injection systems

Part no.	Package size
0101 7967	1 l canister
0101 7968	5 l canister
0101 7969	0,25 l canister



DEUTZ SERVICE
Life Time Support

international:

DEUTZ AG

Ottostr. 1
51149 Köln, Deutschland
Tel. : +49 (0) 221 822-0
Fax : +49 (0) 221 822-3525
E-mail : info@deutz.com
www.deutz.com

DEUTZ (Beijing) Engine Co., Ltd.

1102 CITIC Building
19, Jian Wai Dajie
Beijing 100004, China
Tel. : +86 10 65 25 41 86
Fax : +86 10 65 12 00 42
E-Mail: dbj@deutz.com.cn
www.deutz.com.cn

Deutz Australia Pty. Ltd

Unit 4, 13-15 Brough Street
Springvale, Vic. 3195, Australia
Tel. : +61 3 9549 8400
Fax : +61 3 9549 8490
E-Mail: deutzoz@deutz.com
www.deutz.com.au

DEUTZ Corporation

3883 Steve Reynolds Blvd.
Norcross, GA 30093, USA
Tel. : +1 770 564 7100
Fax : +1 770 564 7222
E-mail : engines@deutzusa.com
www.deutzusa.com

DEUTZ Asia-Pacific (Pte) Ltd.

10 Gul Crescent
Singapore 629523
Tel. : +65 66 72 7800
Fax : +65 62 64 1779 / 62 65 3007
E-mail : dap@deutz.com
www.deutz.com.sg